



INDOFINE Chemical Company, Inc.

121 Stryker Lane, Bldg. 30, Suite 1 • Hillsborough, NJ 08844 • U.S.A.

Phone: (908) 359-6778 • FAX: (908) 359-1179

website: www.indofinechemical.com

e-mail: chemical@indofinechemical.com

CERTIFICATE OF ANALYSIS

Catalog Number: 19-489

Product Name: **2-CHLORO-2',4',6'-TRIMETHOXYCHALCONE**

Lot Number: 0205102

Chemical Formula: C₁₈H₁₇ClO₄

Molecular Weight: 332.79

Melting Point: 127-129°C

Appearance: Off white powder

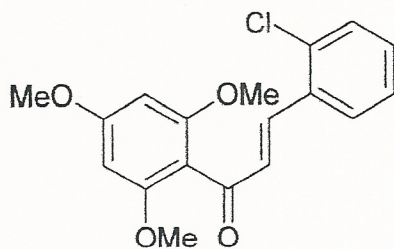
Solubility: Soluble in Chloroform

TLC: Hexane:Ethyl acetate (7:3)

NMR Spectrum: Enclosed

Storage: Cool dry place

Purity(HPLC): 99.84%





INDOFINE Chemical Company, Inc.

121 Stryker Lane, Bldg. 30, Suite 1 • Hillsborough, NJ 08844 • U.S.A.

Phone: (908) 359-6778 • FAX: (908) 359-1179

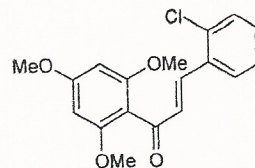
website: www.indofinechemical.com

e-mail: chemical@indofinechemical.com

HPLC ANALYSIS

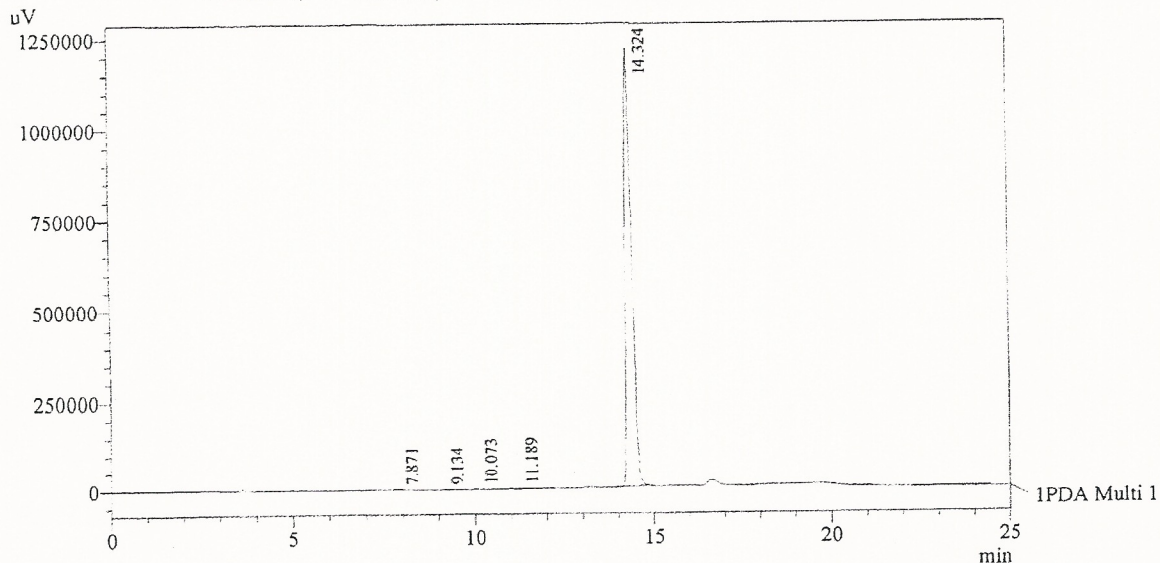
Acquired by : Sanjeev
 Sample Name : 2-Chloro-2',4',6'-trimethoxychalcone
 Sample ID : Lot No:- 0205102
 Injection Volume : 20 uL
 Data Filename : 040413H.lcd
 Method Filename : Linear Gradient.M.lcm

Catalog No.: 19-489
 Product name: 2-Chloro-2',4',6'-trimethoxychalcone
 Lot No.: 0205102



Column : LUNA C-18(2), (250mm x4.6mm 5.0μ)
 Flow : 1.000 mL/min.
 Mobile Phase : A(water) B(Acetonitrile)
 0.01 90 10
 8.0 10 90
 14.0 10 90
 17.0 90 10
 25.0 90 10
 Diluent : Acetonitrile

Chromatogram
 2-Chloro-2',4',6'-trimethoxychalcone D:\promonence\Data\2013\APR-2013\040413H.lcd



1 PDA Multi 1 / 230nm 4nm

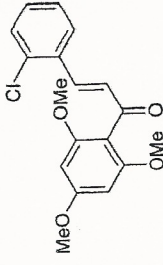
PeakTable

Peak#	Name	Ret. Time	Area	Area %	Relative Retention Time
1	RT:7.871	7.871	8160	0.05	0.55
2	RT:9.134	9.134	1501	0.01	0.64
3	RT:10.073	10.073	6759	0.04	0.70
4	RT:11.189	11.189	8308	0.05	0.78
5	2-Cl-2',4',6'-trimethoxychalcone	14.324	15230014	99.84	1.00
Total			15254742	100.00	



INDOFINE Chemical Company, Inc.
121 STRYKER LANE
BLDG. 30, SUITE 1
HILLSBOROUGH, NJ 08844

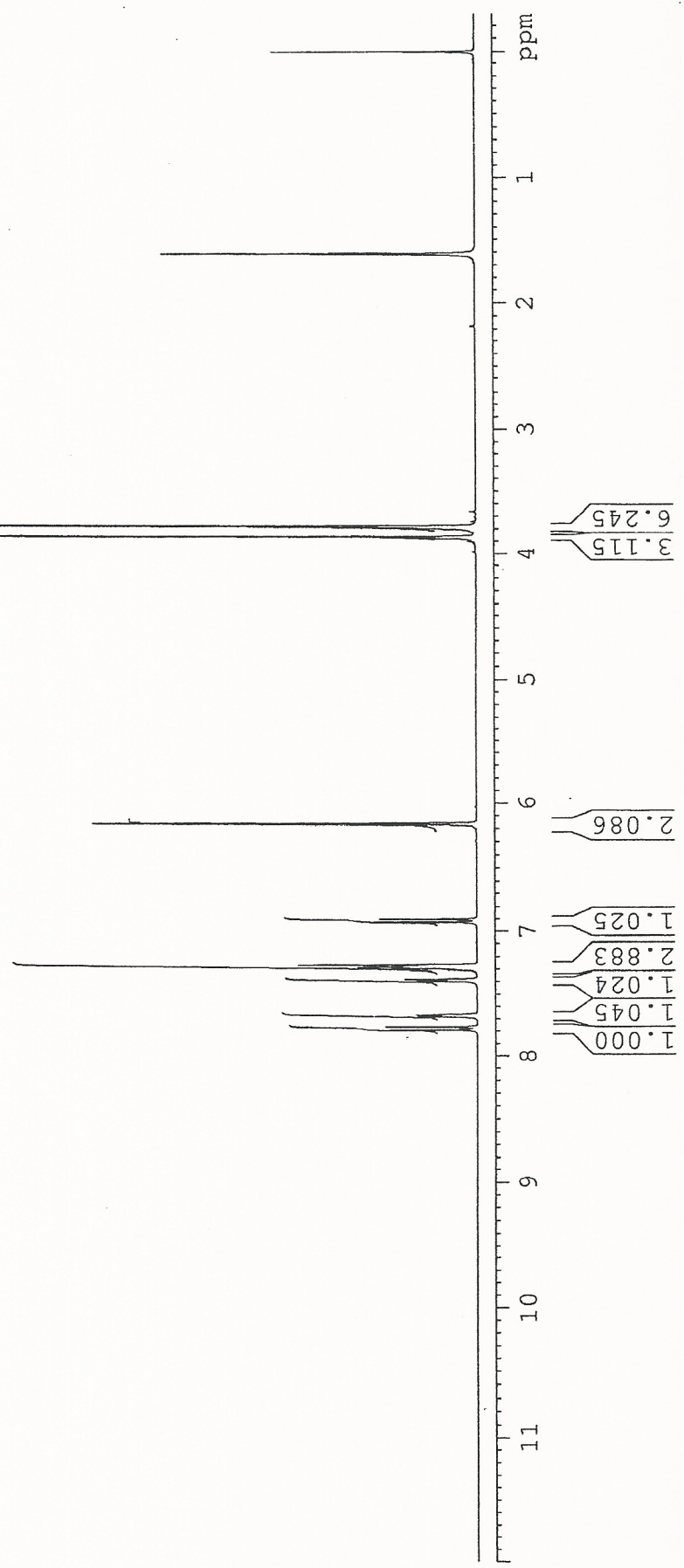
Catalog No.: 19-489
Product name: 2-Chloro-2',4',6'-trimethoxychalcone
Lot No.: 0205102



SOLVENT CDCL3
NS 8
DS 0
SWH 9803.922 Hz
FIDRES 0.326819 Hz
AQ 1.5299480 sec
RG 22.6
DW 51.000 usec
DE 6.00 usec
TE 298.2 K
DI 1.50000000 sec
TD0 1

1H IN CDCL3
AVANCE-600

==== CHANNEL f1 =====
NUC1 1H
P1 7.50 usec
PL1 2.60 dB
PL1W 6.62584448 W
SF01 600.3345228 MHz
SI 5.08
SF 600.3300125 MHz
WDW EM
SSB 0
LB 0.30 Hz
GB 0
PC 1.00

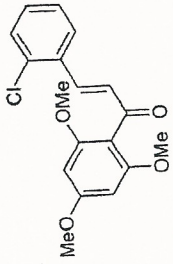




INDOFINE Chemical Company, Inc.
 121 STRYKER LANE
 BLDG. 30, SUITE 1
 HILLSBOROUGH, NJ 08844

Catalog No.: 19-489

Product name: 2-Chloro-2',4',6'-trimethoxychalcone
 Lot No.: 0205102



SOLVENT CDCL3
 NS 8
 DS 0
 SWH 9803.922 Hz
 FIDRES 0.326819 Hz
 AQ 1.5299480 sec
 RG 22.6
 DW 51.000 usec
 DE 6.00 usec
 TE 298.2 K
 D1 1.50000000 sec
 TD0 1

1H IN CDCL3
 AVANCE-600

==== CHANNEL f1 =====
 NUC1 1H
 P1 7.50 usec
 PL1 2.60 dB
 PL1W 6.62584448 W
 SF01 600.3345228 MHz
 SI 32768
 SF 600.3300125 MHz
 WDW EM
 SSB 0
 LB 0.30 Hz
 GB 0
 PC 1.00

